

---



# Avon Enrollment Projected to 2025

Peter M. Prowda, PhD

- 28 Old Mill Ct.
- Simsbury, CT 06070-1949
- [peteprowda@yahoo.com](mailto:peteprowda@yahoo.com)
- (860) 658-9919

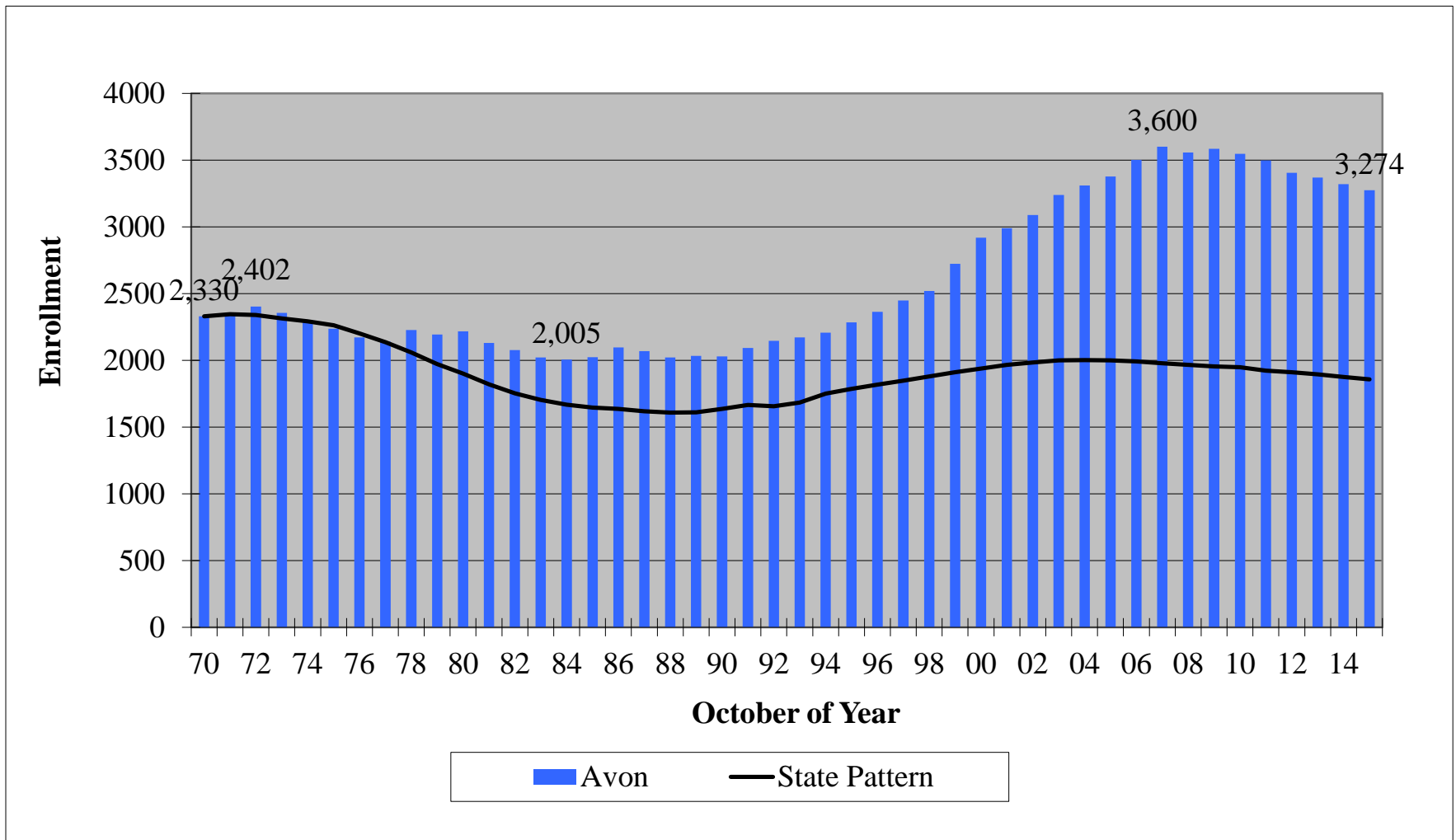
---

# Presentation Organizer

- Enrollment History
- Projections by Level
- Projection Factors
- Contributing Factors
- Prior Projections

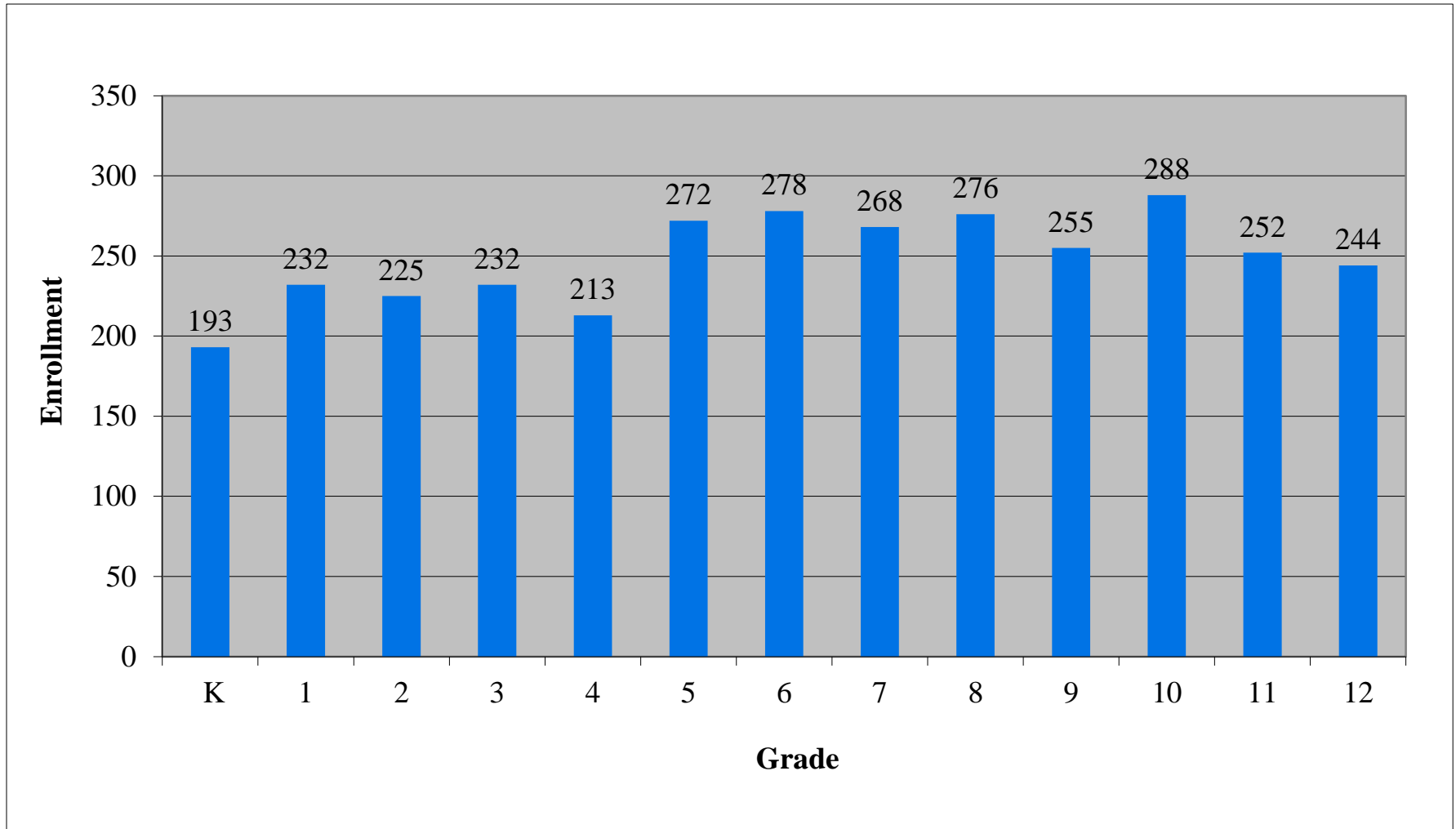
# Enrollment History

## Enrollment from 1970 to Date



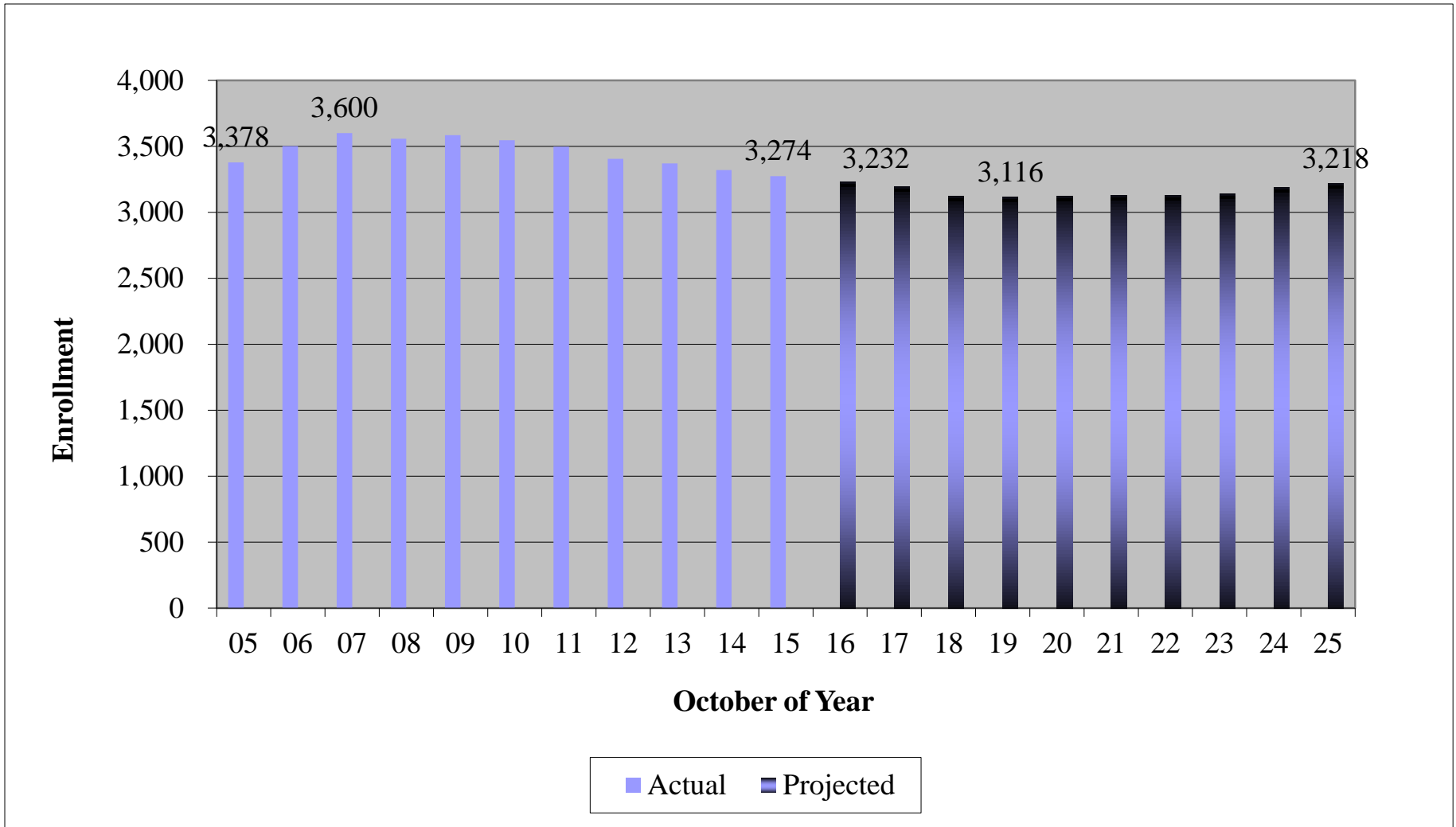
## Projection Factors

# 2015 Enrollment by Grade



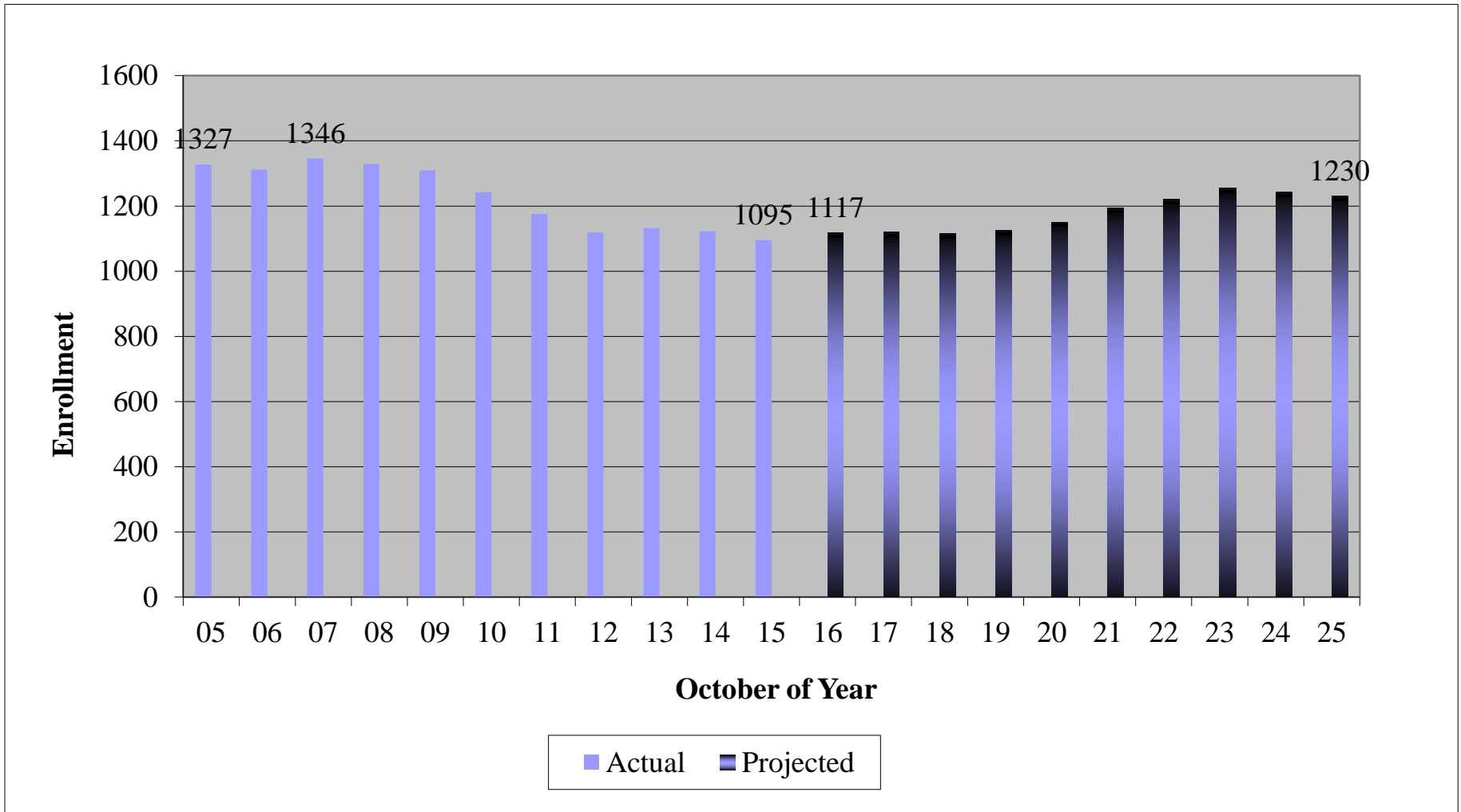
## Projections by Level

# Total Enrollment

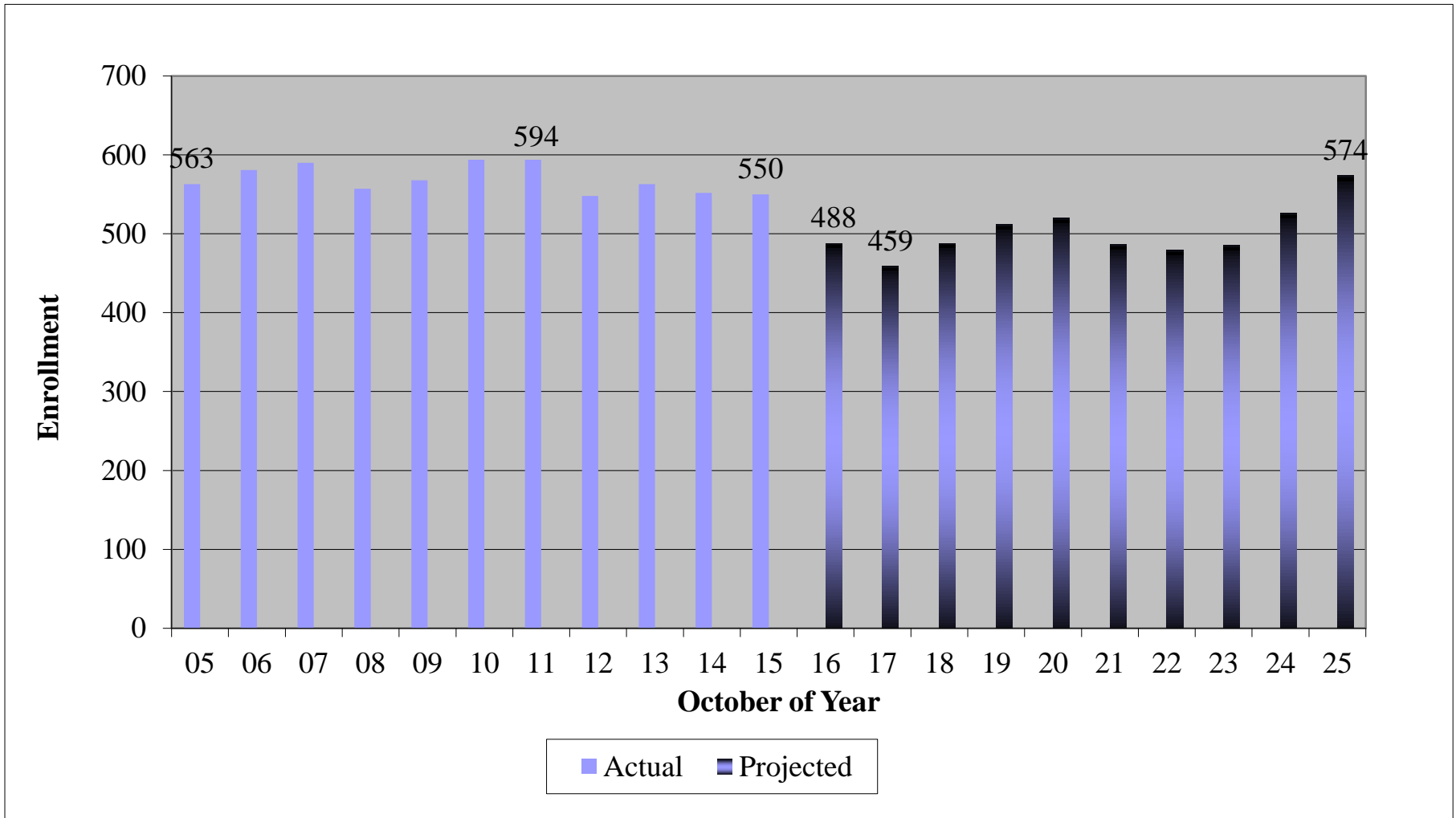


## Projections by Level

# K-4 Enrollment

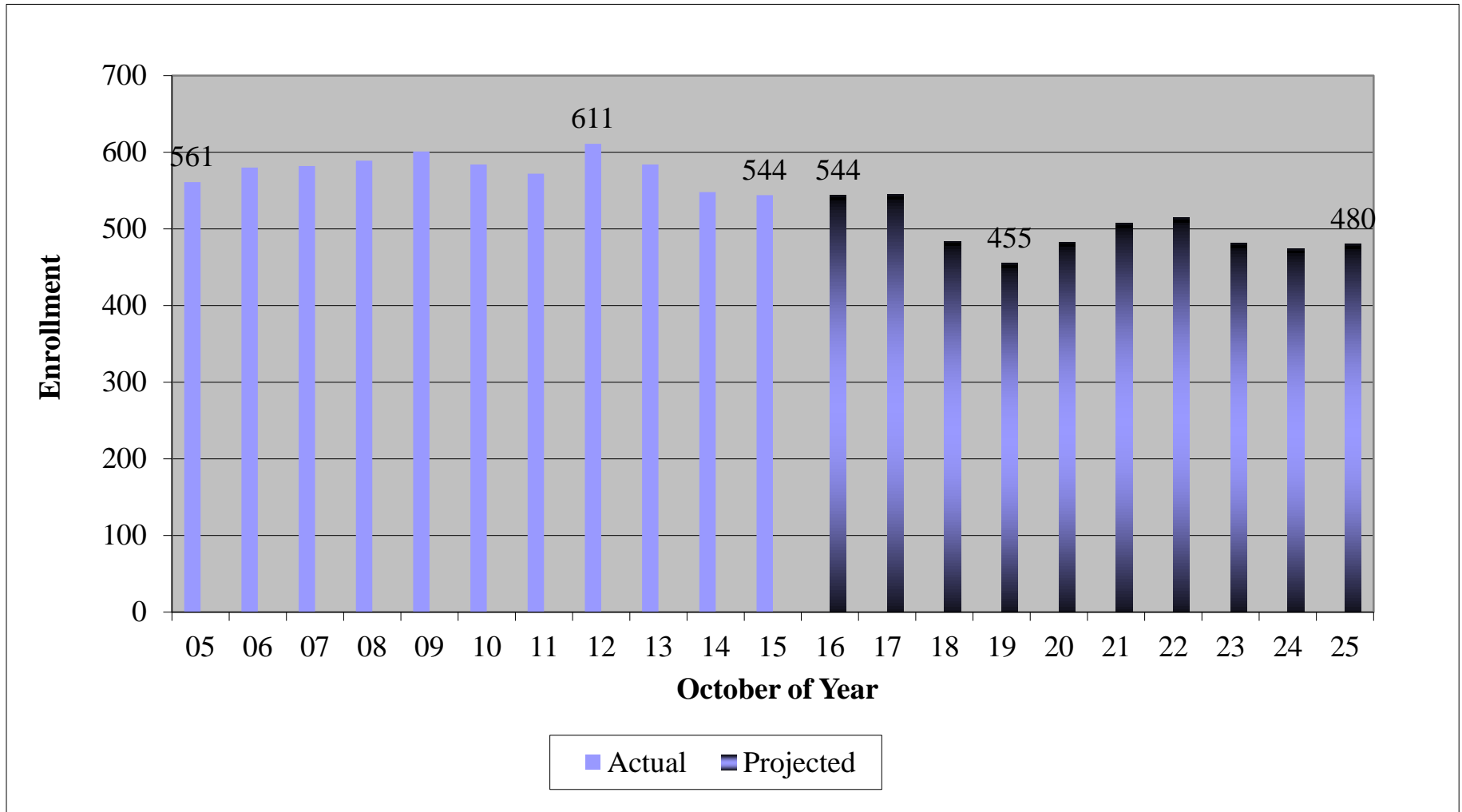


# Thompson Brook School Enrollment



## Projections by Level

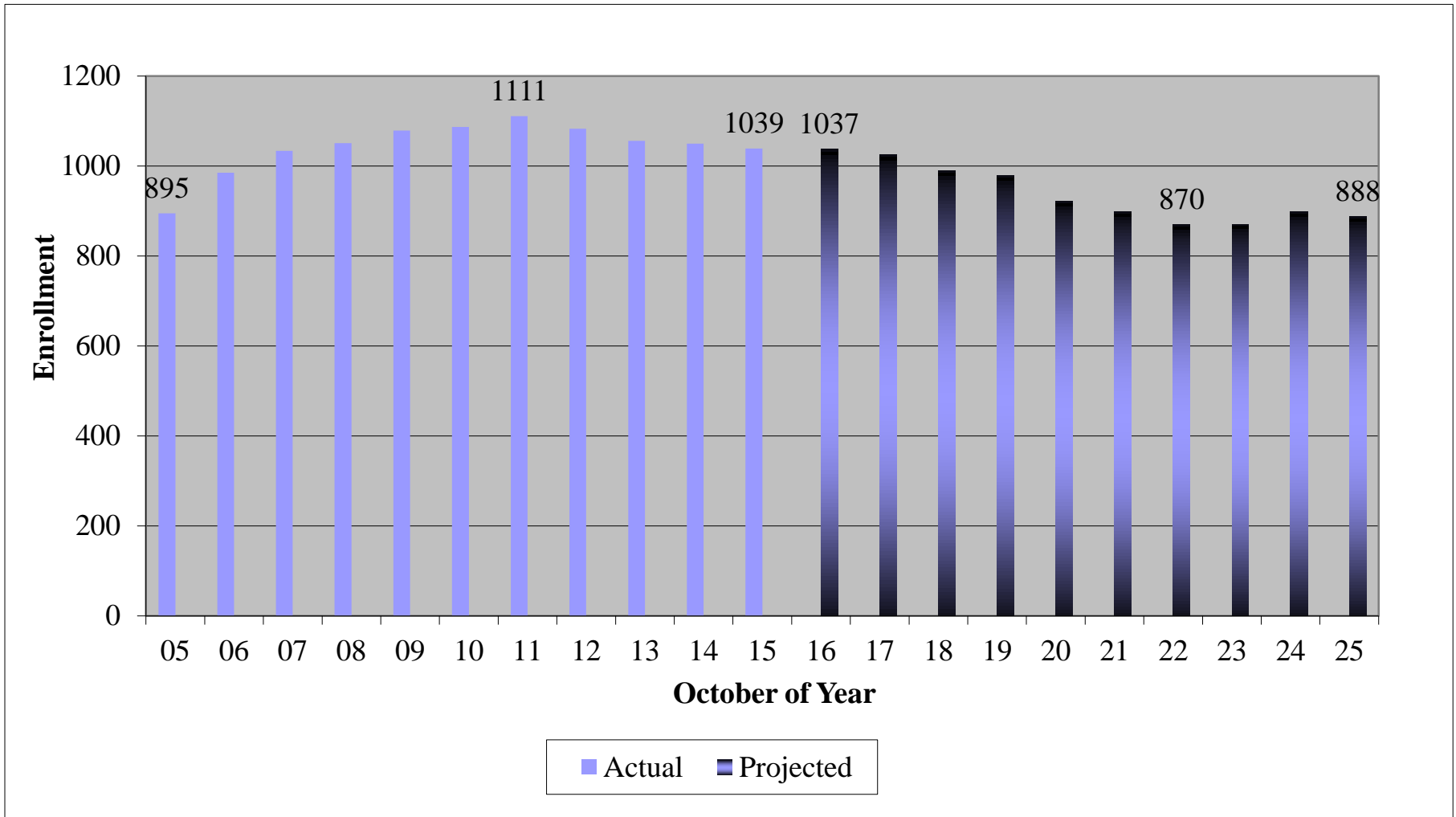
# Avon Middle School Enrollment





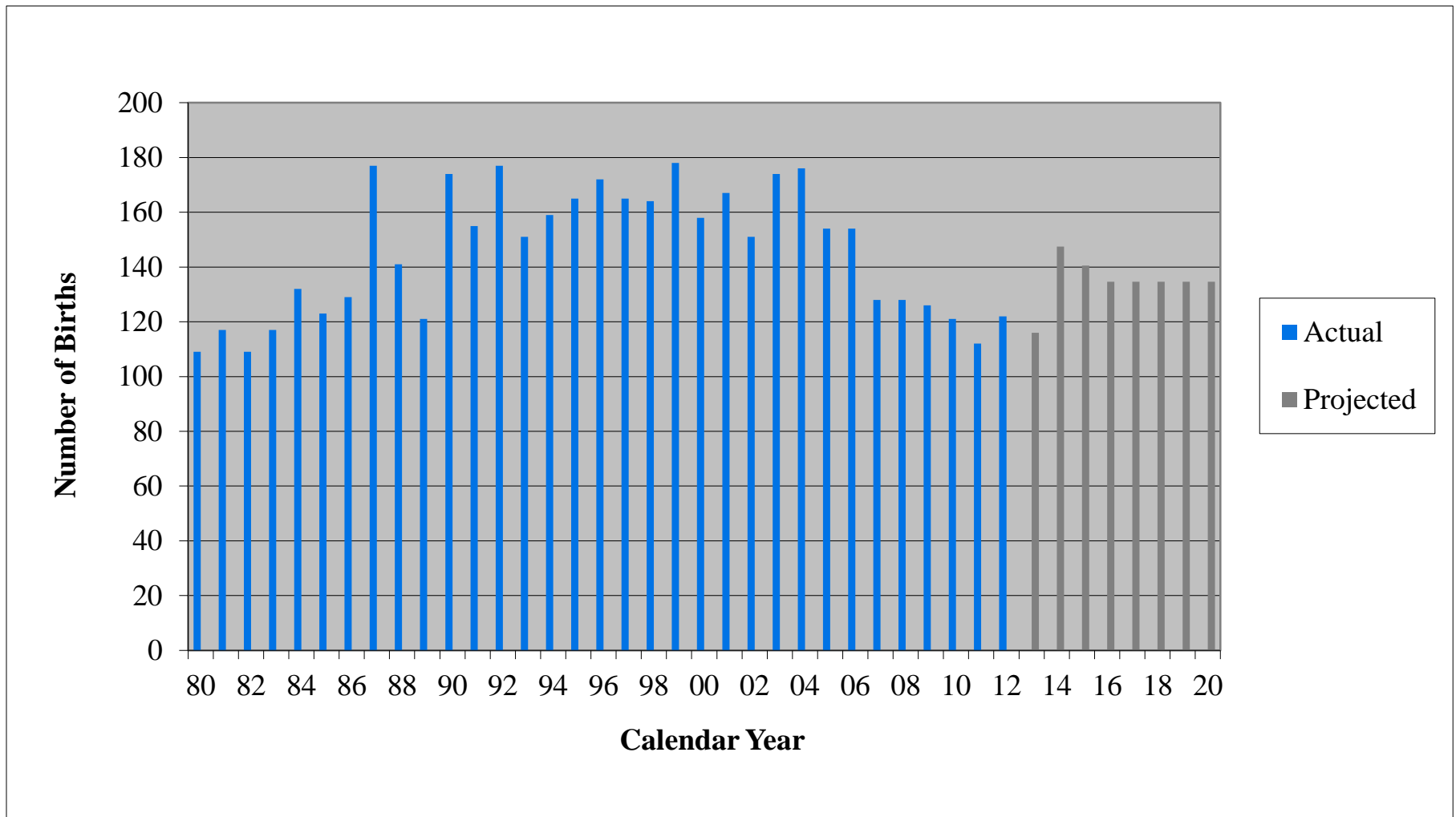
## Projections by Level

# Avon High School Enrollment



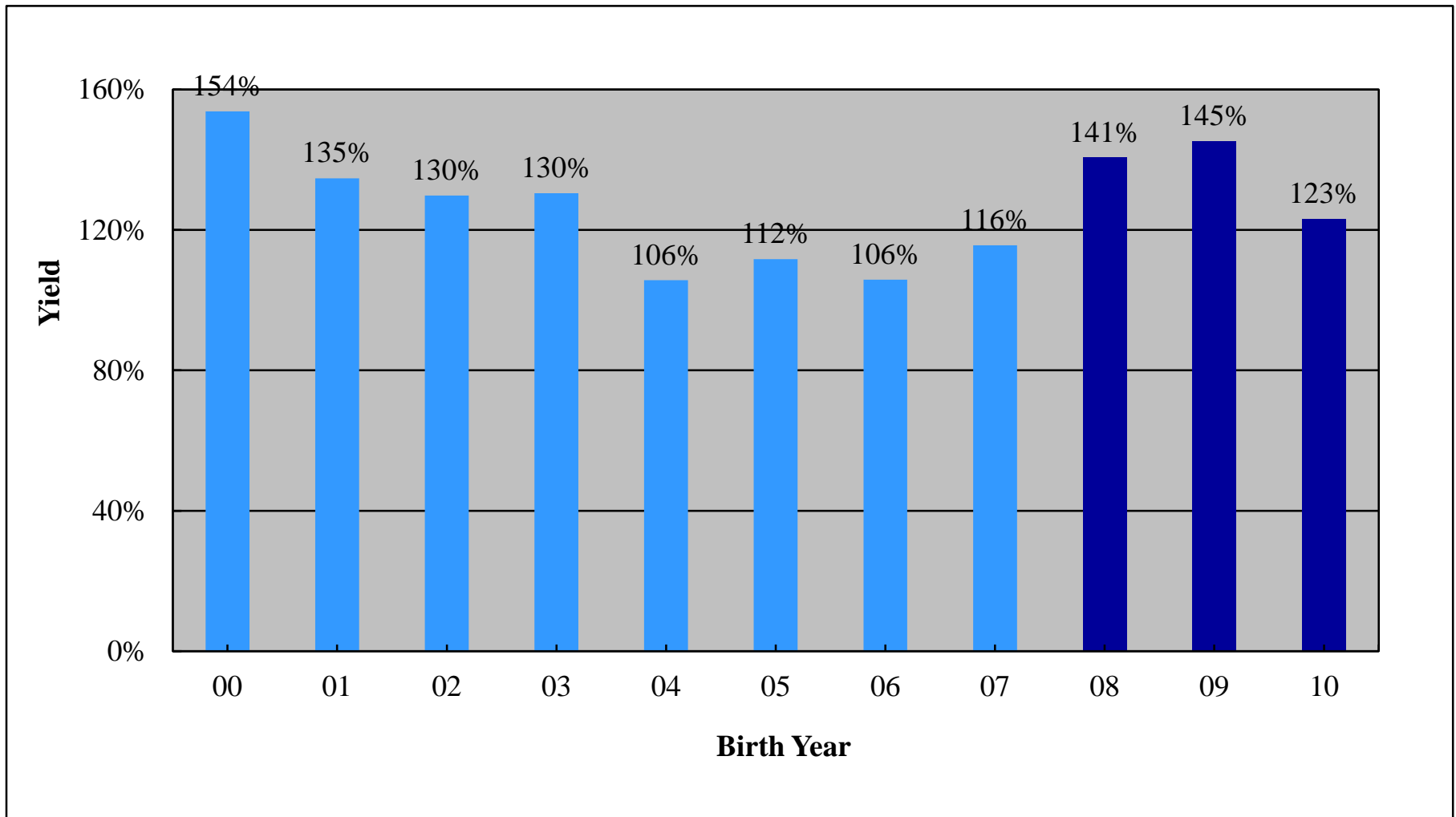
## Projection Factors

# Births 1980 to 2020

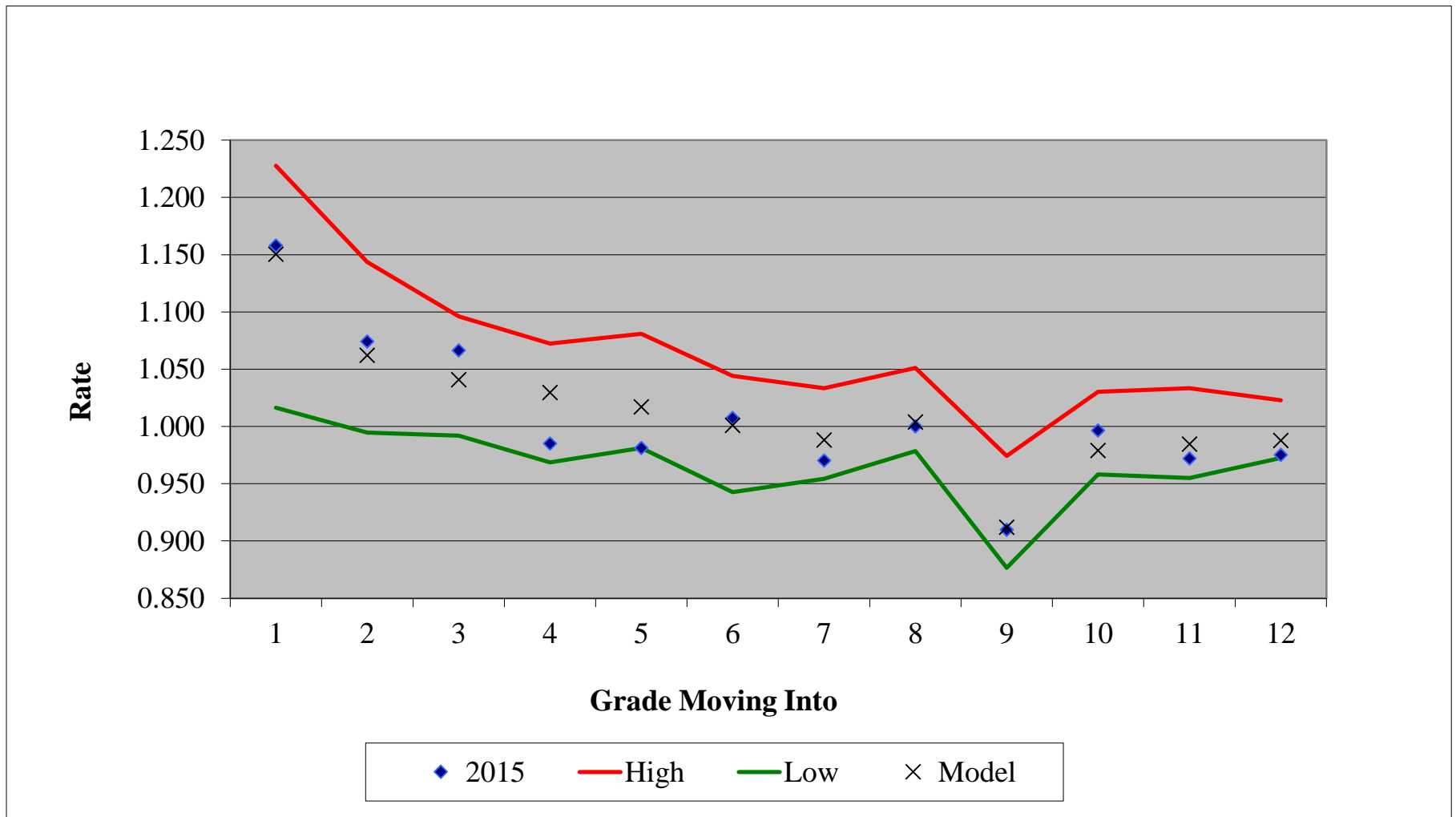


## Projection Factors

# Birth to Kindergarten Growth

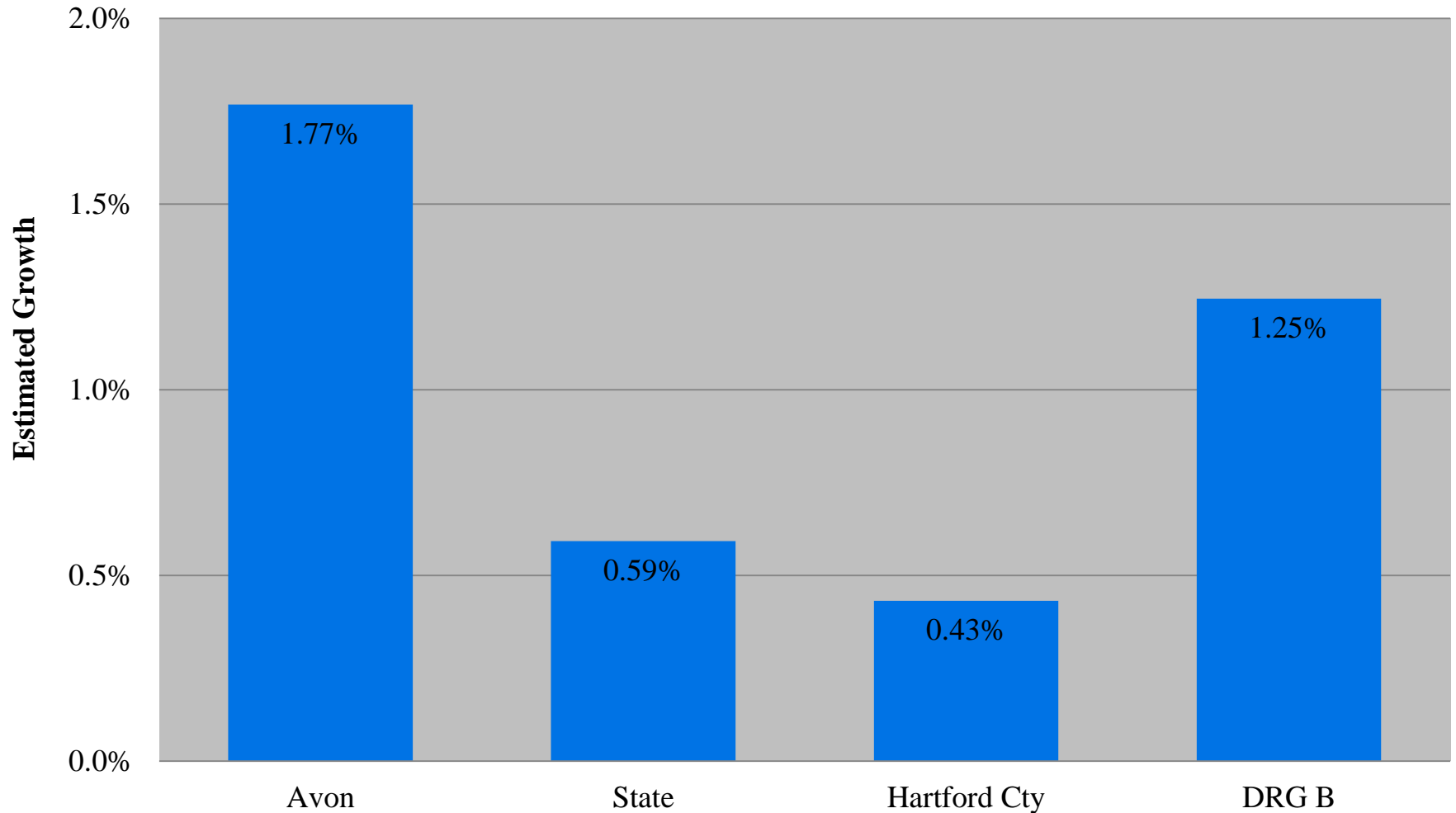


# Grade-to-Grade Growth



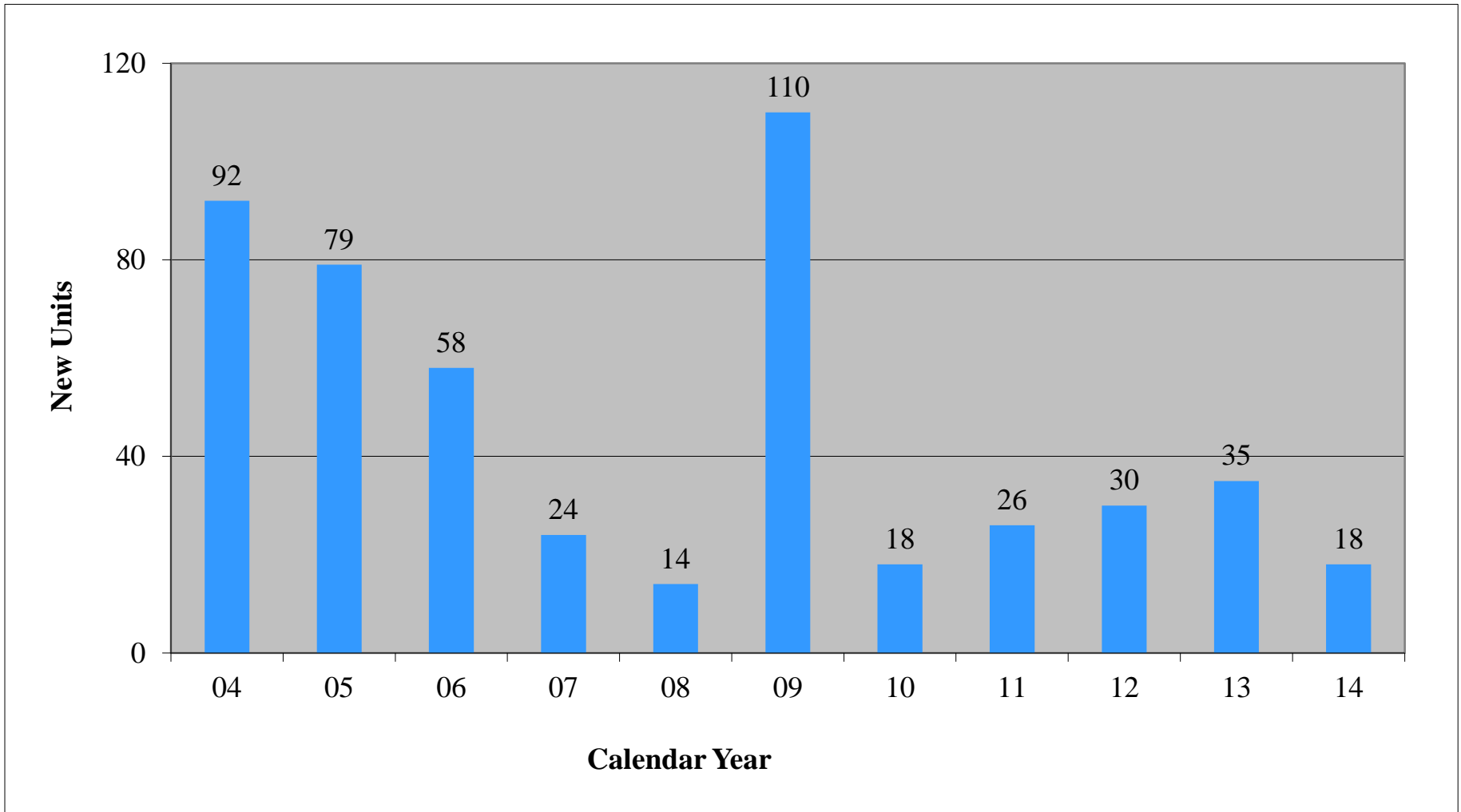
## Contributing Factors

# Town Population Growth 2010-14



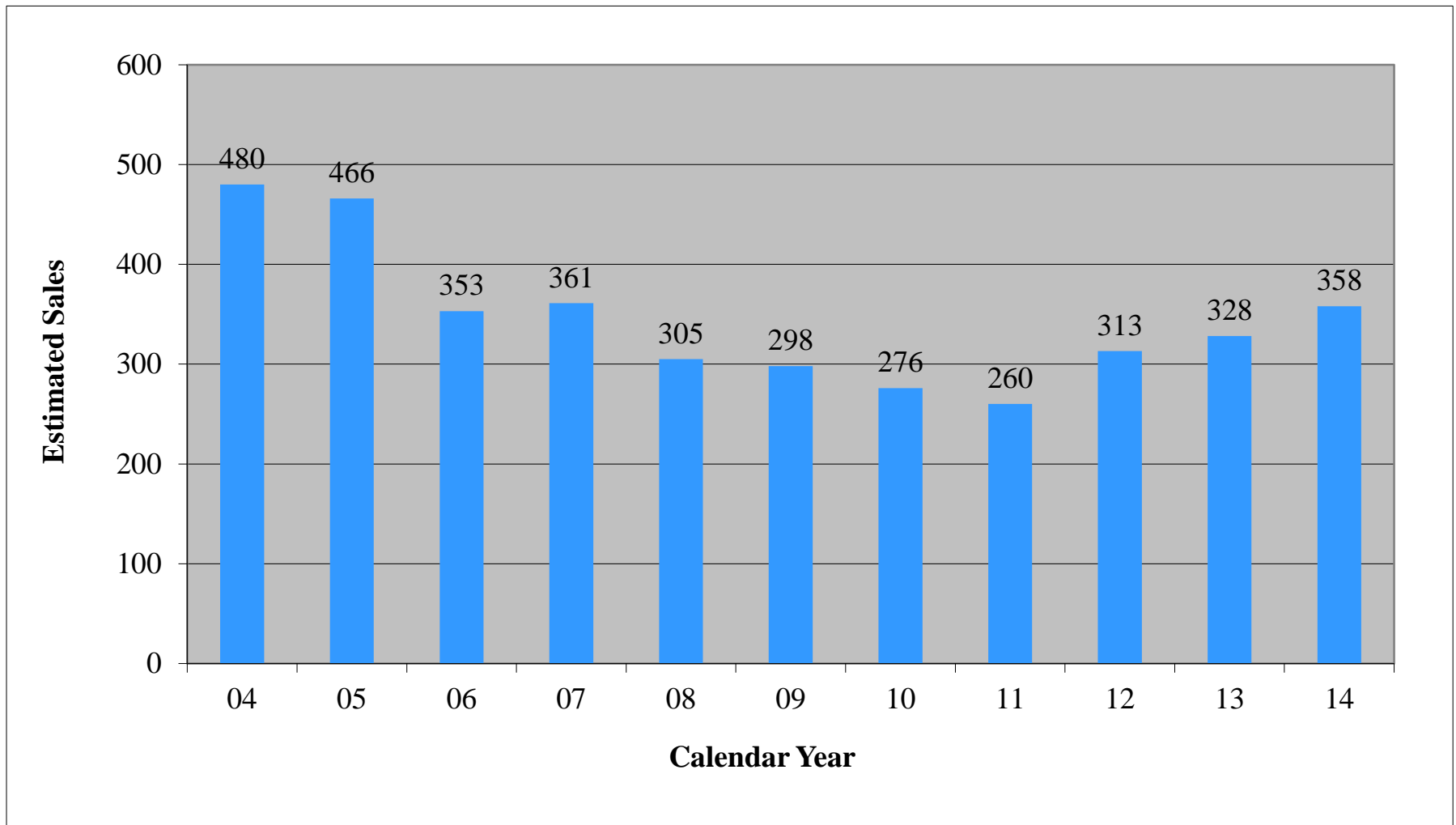
## Contributing Factors

# Net New Housing Units



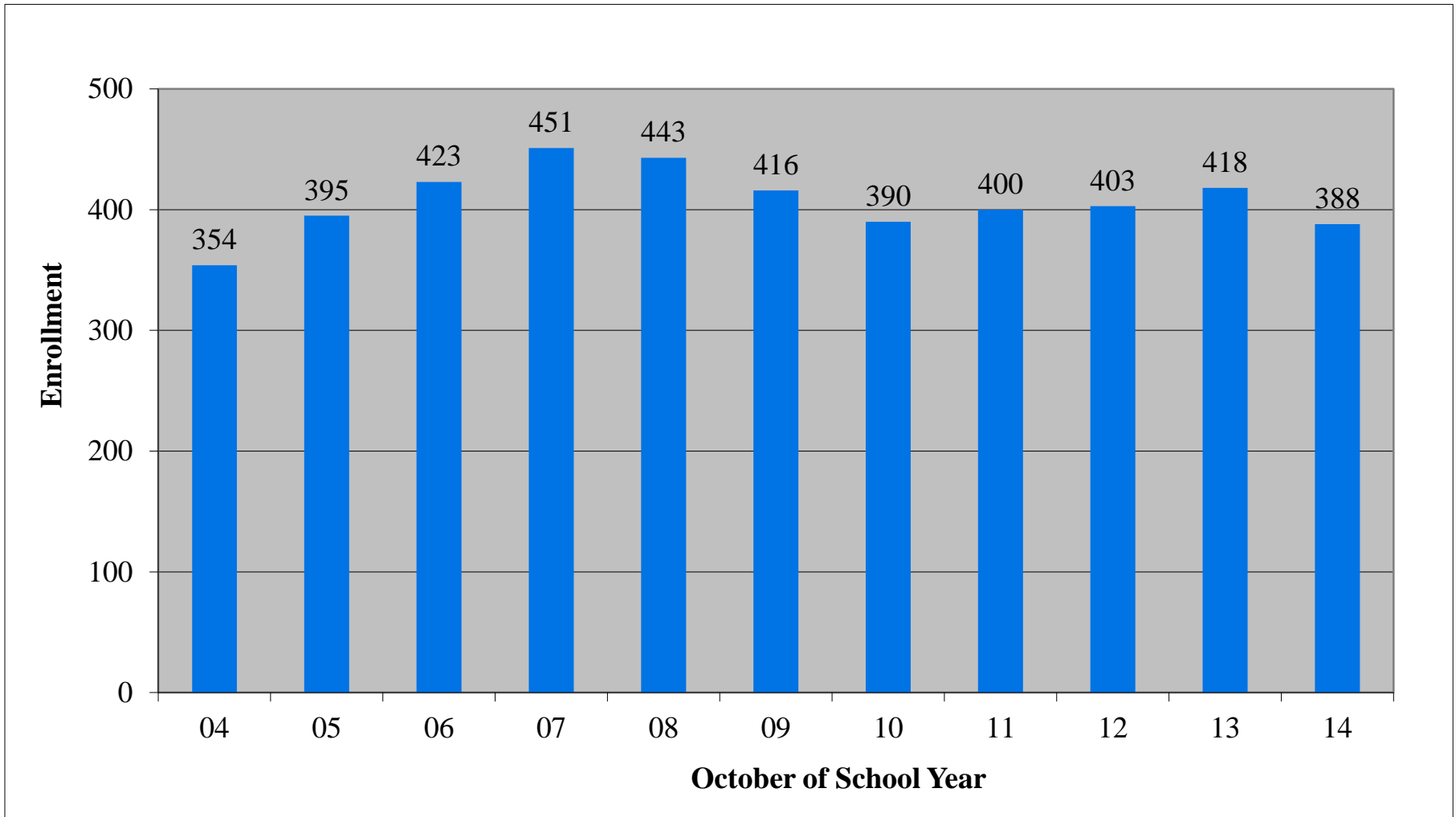
## Contributing Factors

# Estimated Sales of Existing Units



## Contributing Factors

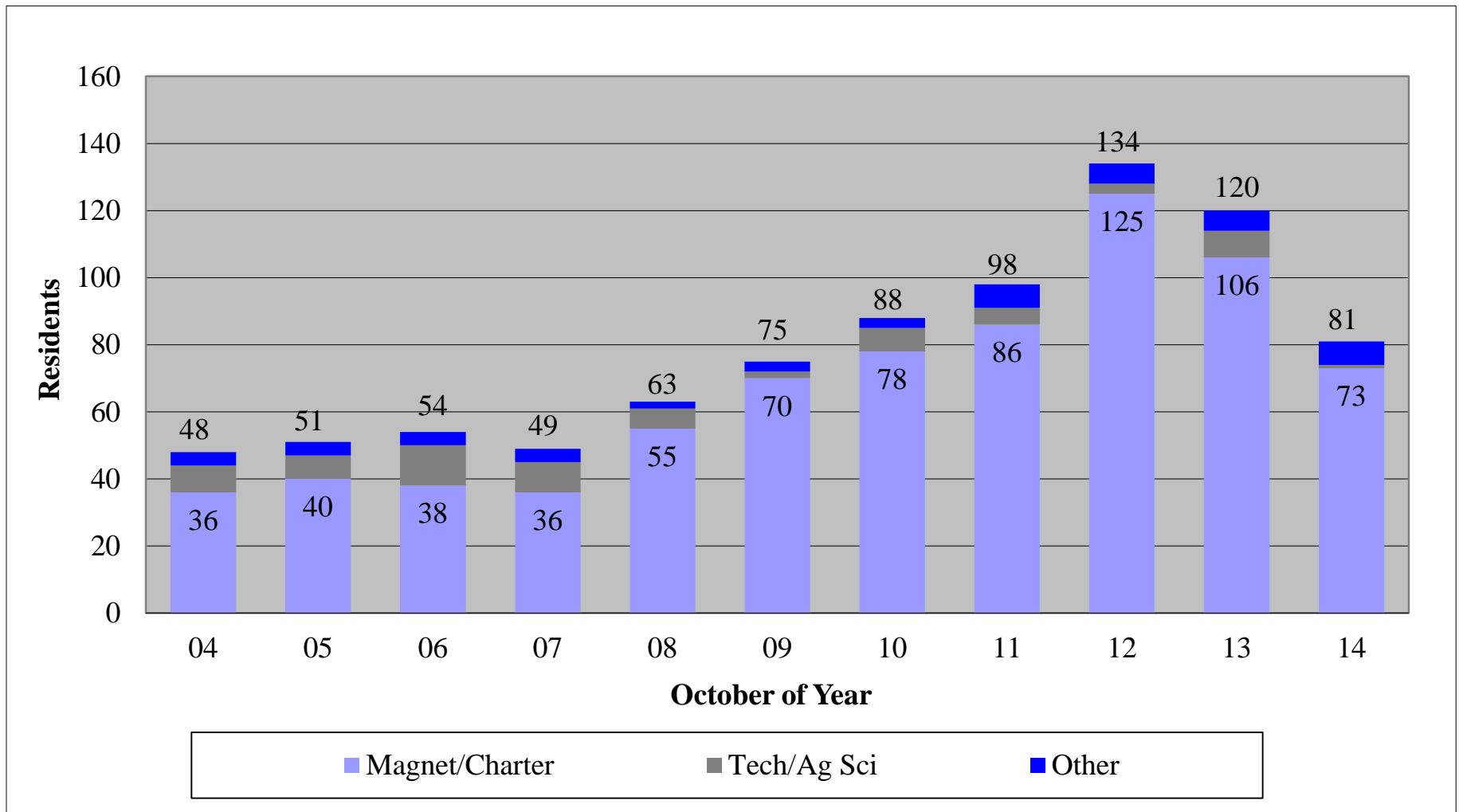
# Non-Public Enrollment





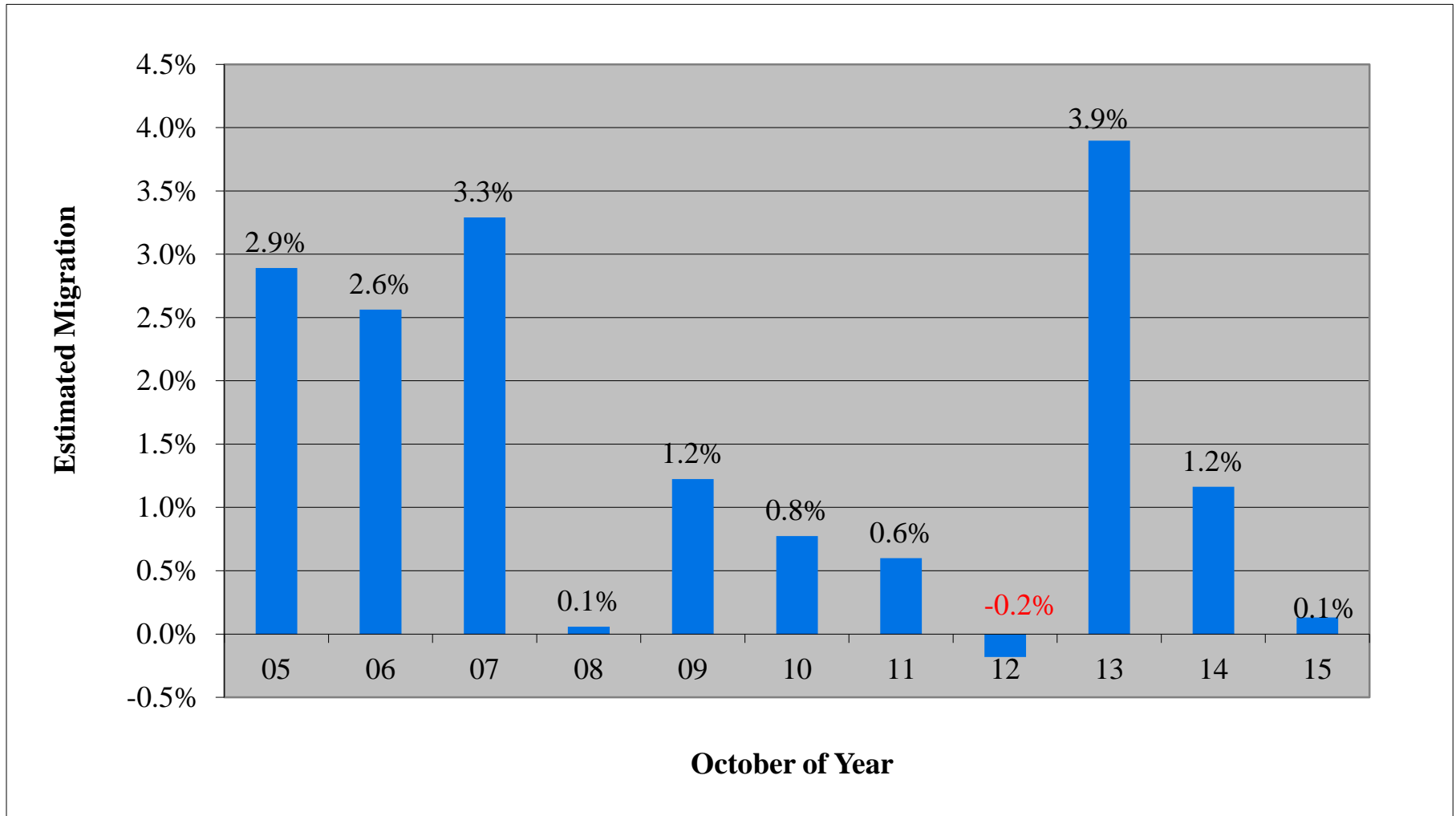
## Contributing Factors

# Enrollment in Other Public Schools

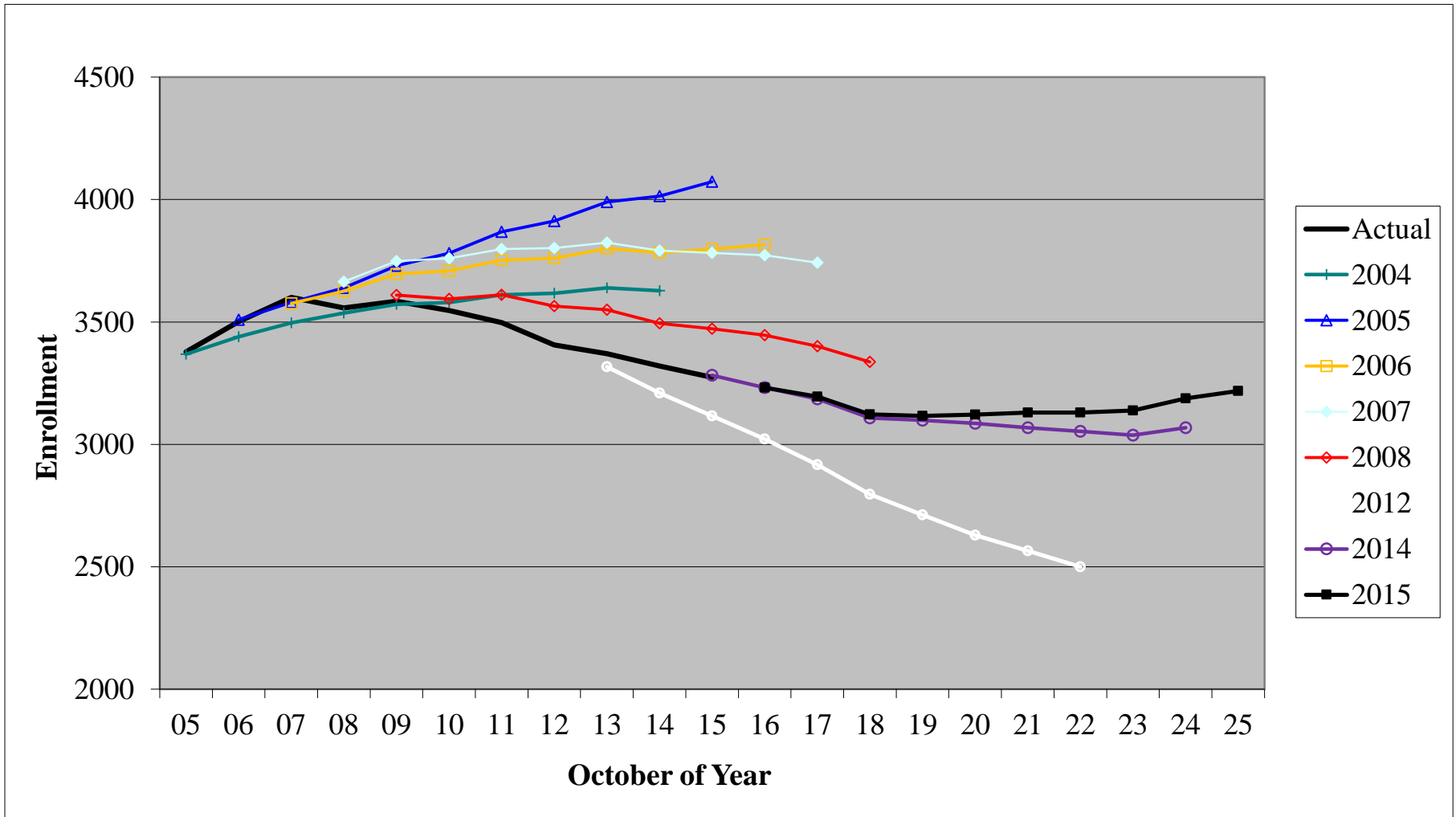


## Projection Factors

# Estimated Student Migration



# Accuracy of Prior Projections



---

# Avon Enrollment Projections to 2025

Questions?

Peter M. Prowda, PhD  
[peteprowda@yahoo.com](mailto:peteprowda@yahoo.com)  
(860) 658-9919